



H 54-27
A 52-29

CARIBOU STREET HOGS - 2000

AVL	left	AVG	GM	AB	R	H	2B	3B	HR	RBI	BB	HBP	SO	SB	CS	E	OBP	SLG
ABBOTT	63	.57	.500	7	10	2	5	1	0	0	0	3	0	0	1	0	.615	.600
LADUCO	104	101	.429	3	7	0	3	0	0	1	0	0	0	0	0	0	.429	.429
EVERETT	510	2	.346	156	512	110	177	35	3	41	126	50	10	99	20	7	.414	.666
BERRA	68	39	.333	17	33	4	11	4	0	1	5	10	1	7	0	0	.500	.545
LEWIS	190	188	.333	2	6	0	2	1	0	0	1	0	0	1	0	1	.333	.500
MOULTON	134	26	.330	62	112	20	37	6	0	2	19	16	3	26	9	2	.427	.438
GREBECK	124	52	.329	56	76	13	25	5	1	0	9	16	2	4	1	1	.457	.421
HENDERSON	482	0	.319	152	486	97	155	28	0	9	51	88	3	93	50	2	.426	.432
GUTIEREZ	295	135	.311	68	164	30	51	2	8	2	22	19	0	18	0	6	.383	.457
MANWARING	151	16	.309	52	139	28	43	9	1	2	15	12	5	28	0	6	.385	.432
FERNANDEZ	534	58	.306	138	480	95	147	42	0	5	81	63	8	63	3	0	.398	.425
MCGWIRE	573	3	.301	160	574	148	173	28	2	71	170	125	2	161	0	12	.428	.728
ABREU	601	19	.299	158	586	97	175	30	12	15	97	99	1	141	26	4	.401	.468
DURHAM	673	23	.271	158	654	110	177	25	6	16	90	69	5	122	36	10	.345	.401
PEREZ	759	267	.262	150	496	58	130	15	8	9	63	19	0	38	12	5	.289	.378
HANSEN,D	118	28	.255	64	94	20	24	9	1	0	12	23	1	22	0	5	.407	.372
AUSMUS	504	54	.251	146	454	62	114	16	4	6	50	47	11	71	17	6	.336	.344
HAMMONDS	288	29	.251	130	263	43	66	15	0	14	52	34	2	64	0	0	.341	.468
CANCELL	48	48	.250	1	4	0	1	1	0	0	0	0	0	1	0	0	.250	.500
GLAUS	606	117	.213	159	493	70	105	23	1	27	92	71	5	144	1	0	.318	.428
BLOWERS	51	50	.200	1	5	1	1	0	0	1	1	0	0	1	0	0	.200	.800
GREENE	249	248	.000	1	5	0	0	0	0	0	0	0	0	2	0	0	.000	.000
HANSEN J	87	88	.000	2	3	0	0	0	0	0	0	1	0	2	0	0	.250	.000
EVANS	0	0	.000	0	0	0	0	0	0	0	0	0	0	0	0	0	.000	.000
PITCHERS	---	---	.000	16Z	0	0	0	0	0	0	0	0	0	0	0	0	.000	.000
TOTALS	7161	1648	.287	16Z	5656	1008	1622	295	47	221	957	765	59	1108	175	50	.377	.473

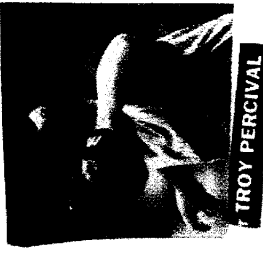
AVL	left	ERA	W	L	PCT	SV	G	GS	CG	SHO	IP	H	R	ER	HR	BB	SO	RATIO
HENRY	28	2.45	1	0	1.000	0	4	1	1	0	11.0	7	3	3	0	2	8	0.82
JOHNSON	299	2.7	24	9	.727	0	41	41	11	3	297.0	262	125	113	37	89	384	1.18
BROCAIL	90	0.0	6	6	.500	34	63	0	0	0	90.7	87	39	35	13	23	84	1.21
KARSAY	87	7.0	5	1	.833	1	27	14	0	0	80.7	78	36	33	8	30	69	1.34
ASHBY	227	0.0	17	7	.708	0	34	34	4	2	227.7	223	113	96	22	61	126	1.25
NITKOWSKI	90	0.7	7	4	.636	3	46	10	0	0	90.0	67	50	39	13	64	70	1.46
PETKOVSEK	91	2.3	5	4	.556	4	70	0	0	0	89.3	108	45	39	6	37	49	1.62
WILKINS	56	15.7	0	0	.000	1	28	0	0	0	41.0	40	19	18	2	21	36	1.49
SHRENK	55	2.0	3	3	.500	1	58	0	0	0	53.7	49	25	25	6	13	33	1.16
WELLS	96	2.7	8	6	.571	2	59	0	0	0	94.0	88	47	46	15	27	39	1.22
COLON	226	7.7	16	9	.640	0	34	34	4	2	219.0	224	121	113	31	83	164	1.40
CORDOVA	177	10.3	14	7	.667	0	28	28	4	1	167.3	190	108	103	24	78	100	1.60
TOTALS	1522	77	106	56	.654	46	492	134	20	10	1461	1423	731	663	177	528	1162	1.34

ARSENAL GUNNERS 2000

Player	GP	AB	R	H	RBI	2B	3B	HR	W	SO	HP	SB	CS	AVG	OBP	E
Blauser	64	175	28	29	13	4	3	3	22	41	8	0	0	.166	.288	12
Young	143	501	91	128	42	19	4	2	72	55	8	61	13	.255	.358	9
Bonds	129	408	97	101	108	22	1	45	83	64	2	14	4	.248	.377	3
Mo Vaughn	152	574	93	164	115	26	0	35	41	133	18	0	0	.286	.352	4
Lopez	108	255	41	80	55	23	0	14	21	44	3	0	0	.314	.373	3
Anderson	159	588	123	155	73	28	7	15	94	117	34	28	5	.264	.395	2
Gwynn	127	456	54	143	63	29	0	9	28	41	3	3	1	.314	.357	1
Cruz	156	548	66	145	62	38	0	11	16	73	8	1	2	.265	.295	8
Boggs	122	317	53	99	37	16	1	2	48	31	0	1	1	.312	.403	8
Ed. Perez	20	35	12	13	10	1	0	1	12	6	0	0	0	.371	.532	0
Diaz	88	260	32	69	22	18	1	2	15	29	3	1	0	.265	.313	4
Stairs	158	582	116	160	168	25	5	58	88	126	4	0	1	.275	.374	1
Polanco	48	105	8	29	9	7	1	0	3	16	0	0	0	.276	.296	6
Eusebio	82	223	29	61	24	13	3	3	22	42	0	0	0	.274	.339	4
A. Brown	88	238	37	59	27	5	3	3	35	37	1	12	2	.248	.347	5
O. Guillen	5	4	1	0	1	0	0	0	3	0	0	0	0	.000	.429	1
Frye	54	120	17	31	8	4	0	0	19	14	3	0	0	.258	.373	1
Shave	47	80	8	24	16	5	0	0	4	13	1	0	0	.300	.341	5
Pitchers	162	5	1	1	0	0	0	0	0	2	0	0	0	.200	.200	17
TOTALS	162	5474	907	1491	853	283	29	203	626	884	96	121	29	.272	.357	94



Player	GP	GS	CG	S	IP	R	ER	H	HR	BB	SO	W	L	ERA	SHO	Tot
F. Garcia	29	29	3	0	170.67	136	125	191	29	99	161	10	7	6.59	0	221
Rupe	19	19	2	0	125.67	65	54	115	13	63	94	11	4	3.87	0	156
Neagle	17	17	2	0	114.33	72	67	113	28	57	92	7	6	5.27	0	123
Hershiser	19	19	1	0	103	79	67	120	11	69	47	4	10	5.85	0	197
Nathan	18	18	0	0	95.33	48	47	71	9	59	64	7	3	4.44	0	99
Mlicki	32	32	1	0	177.67	143	126	227	26	86	95	10	9	6.38	0	218
Reynoso	30	14	3	0	120.67	66	64	132	13	42	68	8	4	4.77	1	183
TJMathews	62	0	0	48	64.33	11	9	42	6	21	44	4	2	1.26	0	64
Stephenson	17	14	2	0	93	46	43	92	13	36	68	7	4	4.16	1	93
Sauerbeck	59	0	0	1	63.33	31	25	43	9	37	49	7	3	3.55	0	74
Jones	75	0	0	0	114	52	50	136	7	48	77	5	4	3.95	0	114
Grimsley	53	0	0	1	65.67	30	27	54	7	30	34	5	4	3.70	0	82
M. Munoz	32	0	0	1	27.67	24	19	35	3	18	9	2	1	6.18	0	58
Montgomery	46	0	0	1	70.67	27	27	41	12	27	51	4	7	3.44	0	71
Magnante	33	0	0	5	37.33	13	10	35	1	14	24	3	0	2.41	0	75
TOTALS	162	14	57	1443.34	843	760	1447	187	706	977	94	68		4.74	2	1828
Relief Pts.	102															



FBN	Pct	Avg	OB	Slug	GM	AB	R	H	2B	3B	HR	RBI	BB	SO	HB	SH	DP	SB	CS	E
405	46	0.187	0.255	0.278	84	187	22	35	11	3	0	16	13	56	4	7	1	2	1	4
694	99	0.219	0.293	0.307	162	688	108	151	30	3	8	68	67	133	5	10	19	6	3	15
191	99	0.232	0.315	0.279	74	190	22	44	9	0	0	14	23	21	0	12	1	0	0	4
97	92	0.382	0.409	0.506	50	89	12	34	9	1	0	15	4	8	0	0	3	0	0	1
207	99	0.293	0.393	0.502	86	205	43	60	15	2	8	30	34	52	0	0	4	3	1	4
88	100	0.295	0.392	0.432	55	88	15	26	8	2	0	16	13	20	1	2	0	3	5	2
193	96	0.335	0.372	0.584	78	185	31	62	30	2	4	22	9	37	2	0	6	2	0	0
290	17	0.184	0.231	0.184	16	49	7	9	0	0	0	1	3	13	0	0	1	0	1	2
414	23	0.237	0.357	0.412	48	97	12	23	3	1	4	20	15	23	3	0	0	0	0	1
128	96	0.262	0.343	0.418	45	122	17	32	7	0	4	18	14	24	1	1	2	0	0	2
512	100	0.301	0.424	0.454	148	511	102	154	28	10	10	67	103	91	6	11	5	32	10	1
349	67	0.209	0.259	0.328	105	235	20	49	14	1	4	19	15	49	1	1	5	6	4	4
421	100	0.213	0.278	0.408	136	422	63	90	16	0	22	71	38	99	0	0	11	0	0	5
184	2	0.333	0.500	0.333	5	3	0	1	0	0	0	0	1	1	0	0	0	0	0	0
604	100	0.317	0.434	0.513	161	602	119	191	23	1	31	110	114	85	10	0	14	10	1	0
372	93	0.292	0.378	0.382	124	346	32	101	21	2	2	54	43	63	5	0	5	2	1	4
543	100	0.262	0.425	0.481	156	543	105	142	32	6	25	101	144	169	10	0	13	0	0	9
593	93	0.313	0.376	0.504	149	552	88	173	24	6	23	116	39	80	16	0	23	13	2	13
530	92	0.304	0.371	0.540	138	487	83	148	20	4	29	94	42	135	10	1	4	7	2	6
102	2	0.000	0.333	0.000	3	2	0	0	0	0	0	0	1	1	0	0	0	0	0	0
pitchers																				
		0.272	0.364	0.435	1823	5603	901	1525	300	44	174	852	735	1160	74	47	111	90	33	80

FBN	Pct	PCT	ERA	W	L	G	GS	CG	SH	SV	IP	H	R	ER	HR	BB	SO	Outs
42	16	0.000	2.700	0	1	1	1	0	0	0	6.7	3	4	2	1	6	3	20
155	100	0.563	4.355	9	7	27	27	0	0	0	155.0	163	78	75	12	55	103	465
20	62	#####	3.649	0	0	11	0	0	0	0	12.3	10	5	5	1	5	22	37
108	7	#####	2.250	0	0	4	0	0	0	0	8.0	8	2	0	4	6	24	
235	94	0.484	4.405	15	16	34	34	11	2	0	220.7	193	127	108	22	104	162	662
80	95	0.500	3.522	3	3	54	0	0	0	6	76.7	74	36	30	8	26	61	230
223	100	0.731	4.155	19	7	36	36	5	2	0	223.1	240	108	103	18	58	204	690
227	91	0.667	4.609	18	9	33	33	9	2	0	207.0	212	114	106	15	79	90	621
63	101	0.667	2.274	4	2	48	0	0	0	4	63.3	39	16	16	4	31	54	190
32	91	1.000	2.793	1	0	22	0	0	0	1	29.0	25	9	9	1	10	15	87
108	87	0.667	3.830	4	2	47	2	0	0	0	94.0	100	47	40	14	24	56	282
198	99	0.500	3.249	12	12	29	29	2	0	0	196.7	174	79	71	16	61	160	599
68	87	0.667	4.827	2	1	37	0	0	0	4	59.7	70	34	32	4	15	61	179
119	6	#####	10.80	0	0	3	0	0	0	0	6.7	14	10	8	1	1	6	20
97	96	0.467	3.664	7	8	54	0	0	0	30	93.3	62	40	38	9	38	68	280
		0.580	3.998	94	68	440	162	27	14	45	1452	1387	709	645	126	517	1071	4386



stats1622000.PRT

[1] Primary Player Statistics For 2000 PLYMOUTH BATS Totals After 162 Games

[1]NAME	BAVG	GM	AB	R	H	2B	3B	HR	RBI	BB	SO	HB	SH	DP	SB	CS
M. Sweeney[4]	.423	17	26	1	11	4	0	1	6	0	7	0	0	0	0	0
B. Brown[4]	.395	13	43	16	17	5	2	2	12	6	10	1	0	0	0	0
C. Gomez[4]	.300	82	207	19	62	8	0	1	27	27	35	0	1	0	1	1
T. Hollandsworth[4]	.289	91	280	44	81	14	2	12	51	31	61	1	0	0	7	3
M. Martinez[4]	.282	10	39	2	11	0	0	0	2	0	0	0	0	0	0	2
D. Bragg[4]	.275	95	280	34	77	11	2	8	41	31	70	7	0	0	2	0
M. Franco[4]	.273	17	66	4	18	3	0	1	4	3	9	0	0	0	0	0
Q. Veras[4]	.266	136	523	92	139	30	4	5	40	84	124	3	1	0	105	18
G. Norton[4]	.250	128	452	59	113	23	1	18	70	62	98	2	0	0	0	4
S. Brosius[4]	.250	140	517	60	129	29	0	15	56	36	89	6	0	0	9	0
R. Brogna[4]	.247	161	635	62	157	21	3	17	73	35	143	3	0	0	5	0
K. Jordan[4]	.247	80	263	30	65	10	0	6	25	19	41	6	0	0	0	0
D. White[4]	.246	132	525	61	129	15	1	9	48	29	85	10	0	0	30	6
J. Leyritz[4]	.241	14	29	1	7	1	0	0	1	4	10	0	0	0	0	0
T. Hunter[4]	.228	113	417	51	95	15	2	12	46	26	91	1	0	0	30	6
T. Bogar[4]	.221	120	321	39	71	13	5	6	26	42	63	3	2	0	3	3
C. Goodwin[4]	.215	14	65	6	14	2	0	1	5	2	10	1	0	0	2	0
B. Davis[4]	.204	67	230	17	47	11	2	4	29	16	56	0	0	0	1	0
J. Buhner[4]	.197	108	269	43	53	6	1	16	42	68	102	1	0	0	1	0
J. Fabregas[4]	.189	74	217	23	41	10	1	5	20	15	25	0	2	0	0	0
B. Johnson[4]	.180	40	111	5	20	2	0	3	7	4	35	0	0	0	0	0
ALL PITCHERS[4]	----	162	0	0	0	0	0	0	0	0	0	0	0	0	0	0
TEAM TOTALS	.246	5515	1357	26	631	1164	6	196	93	162	669	233	142	540	45	0

[1]NAME	ERA	W	L	PCT	G	GS	CG	SH	SV	IP	H	R	ER	HR	BB	SC
B. Wagner[4]	0.98	2	2	.500	51	0	0	0	33	82.2	51	10	9	3	23	123
M. Whisenant[4]	1.86	2	2	.500	28	0	0	0	0	38.2	24	11	8	2	15	31
M. Maddux[4]	2.96	3	3	.500	40	0	0	0	0	67.0	62	25	22	8	25	51
T. Davey[4]	3.55	0	4	.000	33	0	0	0	0	71.0	62	33	28	5	45	66
D. Patterson[4]	3.75	0	0	----	17	0	0	0	0	48.0	51	21	20	4	13	39
G. McMichael[4]	3.86	0	0	----	8	0	0	0	0	11.2	11	5	5	1	9	7
S. Lowe[4]	4.35	8	5	.615	52	0	0	0	1	97.1	88	53	47	8	54	63
A. Pettitte[4]	4.58	9	17	.346	31	31	7	0	0	200.1	217	112	102	21	99	138
M. Portugal[4]	4.92	4	5	.444	10	10	3	0	0	71.1	81	44	39	11	20	39
R. Villone[4]	5.42	7	14	.333	30	24	4	1	0	152.2	157	103	92	15	108	108
J. Lieber[4]	5.48	6	19	.240	31	31	6	1	0	215.0	240	139	131	44	81	216
A. Sele[4]	5.87	8	11	.421	25	25	8	2	0	153.1	193	103	100	13	79	134
S. Avery[4]	6.49	0	9	.000	11	10	1	0	0	61.0	70	49	44	9	61	28
S. Sparks[4]	7.46	8	11	.421	27	26	1	0	0	126.2	172	115	105	19	85	75
B. Pulsipher[4]	9.08	0	3	.000	12	5	1	0	0	36.2	63	40	37	5	28	20
ALL NON-PITCHERS[4]	----	0	0	----	0	0	0	0	0	0.0	0	0	0	0	0	0
Team																
TEAM TOTALS	4.95	105	162	31	34	1542	789	745	1143	57	.352	162	4	1433.1	863	168

NAME	BAVG	GM	AB	R	H	2B	3B	HR	RBI	BB	SO	SB	CS	LF	3B	CS	L
.Arias	1.000	1	1	1	1	0	0	1	1	0	0	0	0	0	0	0	0
.Howard	.600	3	5	0	3	0	0	0	1	0	1	0	0	0	0	0	0
.Walker	.382	143	479	113	183	29	8	42	139	52	56	17	1	16	5	2	3
.Lomar	.307	156	583	112	179	40	1	18	95	117	104	13	14	10	28	6	5
.Markin	.303	157	613	112	186	36	4	14	79	90	66	2	7	11	22	8	7
.Rodriguez	.298	155	625	83	186	21	5	29	105	32	60	0	0	23	18	5	7
.Snow	.297	136	428	70	127	20	2	13	57	57	88	5	0	7	0	0	4
.Agbayani	.294	77	204	43	60	15	1	13	41	24	46	4	0	8	2	0	1
.Zeile	.291	157	601	86	175	35	2	19	87	44	93	4	0	16	0	0	24
.Lankford	.285	130	431	84	123	28	3	13	58	60	116	5	0	6	2	4	1
.Millar	.284	111	370	44	105	14	2	3	49	31	64	8	0	8	1	0	3
.Echevarria	.283	69	184	28	52	11	0	7	33	21	27	4	0	5	0	0	2
.Justice	.271	131	410	82	111	21	0	17	80	83	72	1	0	15	0	0	4
.Cruz	.251	118	354	65	89	21	3	10	47	53	93	0	0	3	9	2	1
.Vidro	.243	21	37	5	9	4	0	0	2	0	3	1	0	1	0	0	0
.Rivera	.226	27	53	11	12	4	0	2	6	6	17	0	0	1	1	0	0
.Abbott	.200	46	80	8	16	5	0	2	10	10	22	0	0	0	1	0	1
.Mirabelli	.200	35	75	9	15	1	0	2	7	12	17	0	3	2	0	0	0
.Ledee	.167	5	6	0	1	0	0	0	1	0	2	0	0	0	1	0	0
.Hinch	.000	1	1	0	0	0	0	0	0	0	1	0	0	0	0	0	0
ALL PITCHERS	----	162	0	2	0	0	0	0	0	1	0	0	1	0	0	0	12

TEAM TOTALS	.295	5540	1633	31	898	948	26	90	75	162	958	305	205	693	64	132	27

NAME	ERA	W	L	PCT	G	GS	CG	SH	SV	IP	H	R	ER	HR	BB	SO
.Garces	0.64	1	1	.500	9	0	0	0	3	14.0	7	2	1	1	7	13
.Urbina	2.68	10	6	.625	68	0	0	0	31	77.1	59	24	23	6	32	86
.Burkett	3.37	1	0	1.000	6	0	0	0	0	10.2	10	4	4	1	2	9
.Sanders	3.38	1	0	1.000	23	1	0	0	1	45.1	44	18	17	7	20	36
.Turman	3.65	16	4	.800	35	23	3	2	0	160.1	143	65	65	21	48	85
.Matteland	3.73	3	0	1.000	62	0	0	0	2	72.1	68	32	30	10	29	66
.Ayala	3.80	7	6	.538	55	0	0	0	2	83.0	63	40	35	10	47	88
.Guthrie	4.11	1	0	1.000	28	0	0	0	0	35.0	34	18	16	6	14	37
.Pavano	4.19	6	3	.667	18	18	2	1	0	111.2	120	55	52	11	37	76
.Meredia	4.23	3	0	1.000	25	0	0	0	0	27.2	24	13	13	2	11	30
.Alfonseca	4.44	3	5	.375	63	0	0	0	5	79.0	94	39	39	7	28	48
.Maddux	5.19	15	12	.556	37	37	2	0	0	232.1	261	144	134	30	66	154
.Arrojo	5.44	3	2	.600	8	8	1	0	0	44.2	37	27	27	6	16	40
.Tomko	5.48	3	2	.600	8	6	0	0	0	44.1	49	27	27	7	14	33
.Dreifort	5.52	14	11	.560	31	31	3	0	0	189.0	199	129	116	34	90	157
.Eldred	6.75	1	0	1.000	2	2	0	0	0	10.2	12	8	8	3	8	8
.Valdes	7.24	8	14	.364	36	36	4	0	0	204.0	258	168	164	42	85	133
ALL NON-PITCHERS	----	0	0	----	0	0	0	0	0	0.0	0	0	0	0	0	0
Team								2					-2			

TEAM TOTALS	4.81	66		.593	162	15	44	1482	771	554	96			204		1099

FLORIDA SUN



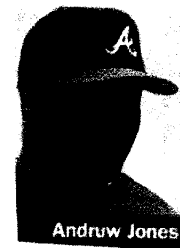
Antonio Alfonseca

SALEM PSYCHICS 2000 BATTING STATS

NAME	G	AB	R	H	2B	3B	HR	RBI	BB	SO	SB	CS	E	AVE	OBP	SLG
J. Dellaero	3	6	0	2	1	0	0	0	0	2	0	0	1	0.333	0.333	0.500
L. Rodriguez	64	111	13	31	1	4	0	8	17	17	0	0	3	0.279	0.375	0.360
B. Haselman	46	141	12	39	3	0	1	19	13	25	1	0	1	0.277	0.338	0.319
T. Walker	135	501	63	132	31	3	5	39	43	74	36	7	10	0.263	0.322	0.367
Jer. Giambi	107	364	24	95	22	2	1	33	28	76	0	0	6	0.261	0.314	0.341
J. Edmonds	90	205	31	52	15	3	7	30	34	38	6	5	0	0.254	0.360	0.459
C. Johnson	141	505	62	127	27	3	13	62	63	128	0	0	3	0.251	0.335	0.394
G. Kapler	127	454	49	110	30	6	13	47	45	92	9	6	7	0.242	0.311	0.421
C. Guzman	99	301	34	71	9	2	4	21	16	65	10	11	13	0.236	0.274	0.319
C. Delgado	157	595	76	137	47	3	40	126	73	151	2	0	15	0.230	0.314	0.521
A. Ledesma	93	276	23	61	12	0	0	19	10	47	1	0	6	0.221	0.248	0.264
J. Valentin	140	522	46	114	20	0	12	51	49	82	0	0	18	0.218	0.285	0.326
M. Benard	161	680	90	147	34	4	13	33	61	133	43	12	6	0.216	0.281	0.335
M. Mordecai	67	204	19	43	6	2	4	27	16	28	1	3	6	0.211	0.268	0.319
S. Berry	72	230	17	48	7	1	1	11	13	37	0	0	0	0.209	0.251	0.261
R. McGuire	61	164	14	34	7	0	3	21	26	47	0	0	3	0.207	0.316	0.305
R. Minor	1	5	0	1	1	0	0	1	0	1	0	0	0	0.200	0.200	0.400
B. Higginson	129	440	52	86	23	0	6	45	63	80	3	6	3	0.195	0.296	0.289
R. Branyan	3	7	0	1	0	0	0	0	0	4	0	0	0	0.143	0.143	0.143
Pitchers	162	0	0	0	0	0	0	0	0	0	0	0	13	0.000	0.000	0.000
TOTALS	162	5711	625	1331	296	33	123	593	570	1127	112	50	114	0.233	0.303	0.361

SALEM PSYCHICS 2000
PITCHING STATS

NAME	W	L	SV	G	GS	CG	IP	R	ER	H	HR	BB	K	SH	ERA	WPCT
K. Brown	11	16	0	38	38	17	302 2/3	129	117	270	24	90	257	3	3.48	0.407
C. Haney	1	4	0	24	0	0	41	19	18	44	4	15	23	0	3.95	0.200
B. Radke	13	14	0	34	34	11	256	130	124	274	28	66	144	0	4.36	0.481
R. Reed	9	13	0	26	26	6	186 2/3	98	91	191	22	77	138	0	4.39	0.409
R. Rincon	2	4	3	39	0	0	39 2/3	25	20	40	4	26	21	0	4.54	0.333
D. Wheeler	0	3	0	5	5	0	24	17	14	29	4	13	19	0	5.25	0.000
J. Mesa	1	4	2	46	0	0	61 1/3	45	40	84	6	25	49	0	5.87	0.200
J. Dipoto	2	6	3	51	0	0	90 1/3	63	59	105	11	43	79	0	5.88	0.250
J. Nelson	1	3	2	26	0	0	47 1/3	33	33	34	6	50	55	0	6.27	0.250
M. Trombley	5	5	3	63	0	0	68	48	48	84	14	26	59	0	6.35	0.500
C. Brock	6	12	0	20	20	5	123	91	89	153	13	57	77	0	6.51	0.333
Perez	2	9	0	20	20	3	102 1/3	83	75	125	14	66	73	0	6.60	0.182
Rekar	1	13	1	21	19	4	110 1/3	92	85	158	16	42	69	1	6.93	0.071
P. Munro	1	1	1	22	0	0	35 1/3	40	38	57	11	22	23	0	9.68	0.500
TEAM									3					1		
Totals	55	107	15	162	162	46	1488	913	854	1648	177	618	1086	5	5.17	0.340



HOTLANTA POSSUMS

GAMES PLAYED
GAMES TO GO

162
0

HITTERS	G	AB	R	H	RBI	D	T	HR	BB	HBP	K	SB	CS	E	BA	OBA	SLG
R. Fick	9	8	1	3	1	0	0	0	1	0	1	0	0	0	0.375	0.444	0.375
M. Cairo	71	160	24	52	8	5	0	0	10	2	19	8	2	2	0.325	0.372	0.356
A. Ramirez	34	97	16	31	12	8	2	1	8	0	27	1	0	4	0.320	0.371	0.474
B. Grieve	142	470	77	148	88	31	0	33	63	9	113	1	1	3	0.315	0.406	0.591
K. Sefcik	95	172	32	54	22	13	2	1	18	1	20	11	1	0	0.314	0.382	0.430
K. Stocker	90	275	35	81	26	9	4	0	25	5	41	1	2	7	0.295	0.364	0.356
T. Clark	135	508	82	147	68	30	0	16	50	6	134	1	3	9	0.289	0.360	0.443
E. Karros	158	635	102	179	117	46	0	34	61	2	144	1	0	2	0.282	0.347	0.515
A. Beltre	151	520	77	146	76	26	9	17	35	4	92	13	7	22	0.281	0.331	0.463
B. Mayne	106	283	37	77	43	24	2	1	29	1	52	1	0	1	0.272	0.342	0.382
J. Hernandez	135	357	50	93	39	11	1	9	35	1	111	3	1	13	0.261	0.328	0.373
J. Varitek	132	442	57	114	77	32	2	22	48	5	80	1	0	3	0.258	0.337	0.489
A. Jones	162	646	106	157	91	31	6	19	60	12	124	31	9	14	0.243	0.319	0.398
C. Febles	149	462	67	112	38	27	6	8	58	12	101	17	10	16	0.242	0.342	0.379
R. Sexson	114	350	41	83	57	12	5	20	24	3	74	1	0	1	0.237	0.292	0.471
K. Garcia	103	225	28	47	27	7	2	6	13	0	56	1	1	6	0.209	0.252	0.338
S. Andrews	51	98	14	20	12	3	0	5	19	1	33	0	1	6	0.204	0.339	0.388
R. Brown	2	0	2	0	0	0	0	0	1	0	0	0	0	0	#DIV/0!	1.000	#DIV/0!
C. Hermanson	0	0	0	0	0	0	0	0	0	0	0	0	0	0	#DIV/0!	#DIV/0!	#DIV/0!
Pitchers	3	0	1	0	0	0	0	0	0	0	0	0	0	12	#DIV/0!	#DIV/0!	#DIV/0!
TOTALS		5708	849	1544	802	315	41	192	558	64	1222	92	38	121	0.270	0.342	0.441

PITCHERS	W	L	SV	G	GS	CG	IP	R	ER	ERA	H	HR	BB	HBP	K	SHO	PCT	REL
J. Cabrera	1	1	19	22	0	0	24.3	10	6	2.22	16	2	10	1	27	0	0.500	37
G. Swindell	6	4	4	43	0	0	66.0	30	24	3.27	62	10	28	1	58	0	0.600	6
P. Shuey	3	5	7	65	0	0	89.7	35	33	3.31	71	8	40	3	106	0	0.375	7
T. Miller	0	0	0	5	0	0	2.7	1	1	3.38	2	0	3	0	6	0	#DIV/0!	0
S. Sullivan	7	7	5	74	0	0	125.3	55	54	3.88	88	17	47	5	74	0	0.500	3
E. Milton	11	15	0	35	35	3	225.7	127	102	4.07	225	35	81	10	202	1	0.423	-19
H. Carrasco	3	1	1	39	0	0	53.7	29	26	4.36	57	5	20	1	39	0	0.750	3
R. Seanez	1	2	5	36	0	0	42.0	24	22	4.71	51	4	17	1	29	0	0.333	7
J. Santiago	1	2	0	17	0	0	34.0	21	20	5.29	49	8	19	1	6	0	0.333	-3
M. Sirotko	15	14	0	37	37	2	229.3	156	139	5.45	286	28	80	6	127	0	0.517	-13
E. Guardado	0	0	0	21	0	0	19.0	12	12	5.68	20	3	8	1	24	0	#DIV/0!	0
S. Estes	13	16	0	38	38	3	219.7	151	139	5.69	257	23	140	11	164	0	0.448	-19
J. Thompson	6	8	0	21	21	2	118.0	86	76	5.80	140	21	72	6	64	0	0.429	-10
M. Suzuki	0	0	0	5	0	0	11.0	8	8	6.55	17	4	9	0	7	0	#DIV/0!	0
D. Osborne	3	1	0	5	5	0	30.0	24	22	6.60	39	7	12	1	15	0	0.750	1
J. Isringhausen	3	4	0	20	12	0	70.7	65	52	6.62	97	11	37	4	62	0	0.429	-5
J. Navarro	3	5	0	28	14	0	75.0	67	56	6.72	102	7	36	6	30	0	0.375	-7
J. Santana	1	0	0	7	0	0	7.7	8	7	8.22	12	2	3	0	3	0	1.000	1
team																0		
TOTALS	77	85	41	518	162	10	1443.7	909	799	4.98	1591	195	662	58	1043	1	0.475	

Primary Player Statistics For 2000 California Dreamers Totals After 162 Games

NAME	AVG	GM	AB	R	H	2B	3B	HR	RBI	BB	SO	SB	SH	DP	SB	CS	E
D.Lewis	.400	15	10	0	4	1	0	0	0	0	1	0	0	0	0	0	0
Mieske	.378	62	119	20	45	7	1	8	33	7	12	0	0	2	0	0	1
Magadan	.349	56	126	15	44	5	1	1	11	13	21	0	0	2	0	0	3
M.Cordova	.343	102	350	79	120	24	3	23	69	38	65	3	0	8	3	1	1
V.Castilla	.328	135	442	70	145	31	2	24	56	36	53	0	0	14	0	1	12
R.Palmeiro	.308	161	617	119	190	34	1	44	124	89	81	4	0	22	1	0	7
J.Vander Wal	.306	108	255	41	78	23	1	4	34	40	57	1	0	4	0	0	0
S.Sosa	.299	162	623	145	186	24	2	76	192	106	177	3	0	16	0	0	8
H.Frias	.286	9	7	1	2	0	0	0	1	0	0	0	0	0	0	1	0
J.Bell	.272	162	536	112	173	40	1	52	152	69	127	2	0	7	1	0	18
J.King	.269	30	52	10	14	3	0	0	4	15	9	1	0	1	0	0	0
W.Guerrero	.267	11	15	5	4	1	1	1	6	1	0	0	0	2	0	0	0
L.Johnson	.255	108	368	65	94	15	7	0	25	31	36	0	1	8	13	4	2
S.Servais	.250	62	156	24	39	4	1	3	13	16	32	3	0	1	0	1	3
C.Wilson	.250	36	76	8	19	3	1	2	11	8	5	0	1	0	0	0	2
P.Konerko	.236	18	55	9	13	2	1	2	7	6	11	0	0	2	0	1	0
R.Ordonez	.234	162	563	68	132	29	4	1	43	32	55	0	9	14	7	3	2
G.Vaughn	.229	156	584	110	134	25	0	44	123	92	134	4	0	16	10	1	1
M.Johnson	.225	81	218	28	49	10	1	3	23	41	56	1	0	4	3	0	7
S.Pose	.223	38	130	24	29	1	0	0	7	17	23	0	0	1	5	1	6
J.Reboulet	.221	63	113	25	25	8	0	0	6	17	14	1	1	1	0	0	1
C.Kreuter	.200	19	15	1	3	2	0	0	1	1	3	0	0	0	0	0	0
T.Spahr	.164	57	152	21	25	3	0	9	21	17	54	3	0	3	0	0	4
M.Cummings	.000	2	2	0	0	0	0	0	0	0	1	0	0	0	0	0	0
M.Meluskey	----	0	0	0	0	0	0	0	0	0	0	0	0	0	0	0	0
K.Dransfeldt	----	0	0	0	0	0	0	0	0	0	0	0	0	0	0	0	0
A.Kennedy	----	0	0	0	0	0	0	0	0	0	0	0	0	0	0	0	0
ALL PITCHERS	----	162	0	0	0	0	0	0	0	0	0	0	0	0	0	0	9
TEAM TOTALS	.276		5684		1567		28		962		1030		12		48		87
		162		1000		295		297		692		36		128		14	

NAME	ERA	W	L	PCT	G	GS	CG	SH	SV	IP	H	R	ER	HR	BB	SO
J. Johnstone	2.11	6	2	.750	58	0	0	0	38	68.1	40	21	16	7	20	57
P.Borbon	2.90	5	2	.714	43	0	0	0	2	49.2	37	16	16	6	21	20
J.Frascatore	3.64	5	6	.455	51	0	0	0	2	76.2	68	35	31	7	22	36
B.Jones	3.68	0	1	.000	7	0	0	0	1	14.2	16	6	6	1	7	5
R.Nen	4.13	4	4	.500	66	0	0	0	10	69.2	79	33	32	9	29	70
O.Daal	4.21	17	9	.654	35	35	5	0	0	237.1	222	124	111	38	98	158
D.Cone	4.80	12	11	.522	31	31	8	1	0	204.1	174	121	109	28	121	162
K.Rogers	5.11	14	13	.519	32	32	4	0	0	211.1	229	138	120	29	91	110
D.Wells	5.30	20	11	.645	36	36	7	0	0	254.2	272	163	150	50	81	170
C.Loewer	6.46	5	3	.625	13	10	1	1	0	62.2	34	47	45	8	16	33
B.Jones	6.66	1	1	.500	33	1	0	0	1	71.2	71	58	53	12	36	36
T.Stottlemyre	6.92	3	3	.500	17	17	2	0	0	95.0	98	78	73	14	58	55
C.Leskanic	7.36	0	0	----	10	0	0	0	0	11.0	14	10	9	1	3	12
R.Seanez	8.71	1	3	.250	10	0	0	0	0	10.1	13	11	10	2	4	2
ALL NON-PITCHERS	----	0	0	----	0	0	0	0	0	0.0	0	0	0	0	0	0
Team																
TEAM TOTALS	4.88		69		162		27		54		1417		780		607	
		93		.574		162				7.1		861		212		926



David Wells

Primary Player Statistics For 2000 Lake Wobegon Whippets Totals After 162 Games

NAME	BAVG	GM	AB	R	H	2B	3B	HR	RBI	BB	SO	HB	SH	DP	SB	CS	E
H.Bush	.358	141	534	77	191	33	6	4	62	18	85	5	6	11	35	10	17
T.Houston	.333	11	18	4	6	1	0	2	5	1	4	0	0	1	0	0	0
C.Paquette	.324	61	170	31	55	11	0	11	38	11	40	0	0	7	1	0	3
J.Allensworth	.316	36	79	15	25	3	0	1	12	15	19	2	4	2	4	2	1
B.Giles	.311	157	569	117	177	34	3	33	114	113	90	2	0	22	8	0	3
B.Trammell	.304	100	309	59	94	20	1	13	55	63	41	1	0	10	0	0	3
G.Hill	.302	83	278	45	84	13	1	17	50	20	64	0	0	8	2	1	3
J.Giambi	.295	162	614	114	181	37	3	31	106	98	102	12	0	15	1	1	6
J.Offerman	.277	154	621	107	172	37	16	7	59	94	95	3	1	10	23	9	1
J.Jones	.276	117	341	54	94	26	0	8	55	19	68	5	1	13	3	3	4
A.Castillo	.274	96	274	31	75	9	1	6	39	14	48	3	3	8	0	0	4
A.Gonzalez	.272	109	169	18	46	19	1	11	9	28	6	8	4	3	2	13	
J.Valentin	.270	102	282	43	76	11	7	13	54	33	50	2	0	3	4	1	23
E.Burks	.257	134	428	68	110	24	3	28	98	69	104	8	0	10	4	0	3
R.Davis	.247	96	231	35	57	9	2	17	39	18	69	1	3	7	1	1	7
K.Caminiti	.243	99	300	55	73	11	1	13	53	63	70	4	1	6	5	0	10
H.Blanco	.221	108	289	38	64	12	2	5	25	35	32	2	1	5	1	0	5
L.Lopez	.214	46	112	13	24	3	0	2	10	13	37	6	1	0	2	2	3
T.Coquillet	.188	17	16	2	3	0	0	0	2	1	4	0	0	0	0	0	0
F.Garcia	.143	9	7	0	1	0	0	0	0	0	3	0	0	0	0	0	0
ALL PITCHERS	.000	162	2	0	0	0	0	0	0	0	1	0	0	0	0	0	8



TEAM TOTALS	.285	5643	1608	47	887	1054	29	97	117
	162	926	313	212	707	62	142	32	

NAME	ERA	W	L	PCT	G	GS	CG	SH	SV	IP	H	R	ER	HR	BB	SO
K.Foulke	1.74	8	6	.571	71	0	0	0	43	108.1	64	22	21	11	19	125
W.Cumane	1.93	0	0	---	8	0	0	0	0	9.1	6	3	2	1	6	8
R.Glynn	2.45	0	0	---	5	0	0	0	0	3.2	3	1	1	0	2	3
B.Chouinard	2.98	3	7	.300	38	0	0	0	4	42.1	39	17	14	5	9	25
J.Fassero	3.37	0	0	---	3	0	0	0	1	5.1	4	2	2	0	2	3
S.Radinsky	4.44	0	0	---	18	0	0	0	0	24.1	20	12	12	5	13	10
G.Lloyd	4.61	4	5	.444	59	0	0	0	0	68.1	77	40	35	9	18	55
J.Lima	4.96	21	11	.656	39	39	4	0	0	266.2	323	156	147	39	52	191
K.Appier	5.19	9	2	.818	16	16	1	0	0	104.0	128	66	60	15	40	68
C.Finley	5.27	16	16	.500	38	38	1	0	0	234.0	237	156	137	23	123	217
A.Benes	5.58	10	13	.435	32	32	4	1	0	216.0	261	143	134	38	90	145
H.Nomo	5.67	11	9	.550	27	27	3	0	0	184.0	192	137	116	33	91	185
R.Croushore	6.88	2	1	.667	52	0	0	0	0	72.0	74	62	55	16	42	85
R.Beck	7.25	0	0	---	34	0	0	0	1	44.2	65	36	36	4	14	24
B.Stein	8.89	1	7	.125	10	10	1	0	0	53.2	65	58	53	13	39	36
ALL NON-PITCHERS	---	0	0	---	0	0	0	0	0	0.0	0	0	0	0	0	0
Team				0						-1						

TEAM TOTALS	5.16	77	162	14	49	1558	824	560
	85	.525	162	1	1436.2	911	212	

YORKTOWN 2000 HITTING

162 Games

Player	G	AB	H	2B	3B	HR	R	RBI	W	K	SB	CS	HBP	E	AVG	MAX	LFT
Casey, S.	158	606	195	42	1	23	81	102	46	86	0	0	10	4	0.322	653	47
Clemente, E.	63	175	51	19	1	9	26	25	1	43	1	1	0	0	0.291	178	3
Collier, L.	70	148	42	18	2	1	21	23	12	37	5	1	0	17	0.284	149	1
Mathews, G.	12	32	9	1	1	0	5	3	11	8	0	1	0	0	0.281	80	48
Baerga, C.	10	32	9	1	0	1	4	5	3	6	0	1	0	0	0.281	151	119
Gant, R.	161	559	157	33	4	24	78	86	88	111	15	4	0	0	0.281	568	9
Chavez, E.	125	392	104	24	1	16	54	57	48	55	1	1	0	9	0.265	392	0
Kennedy, A.	31	99	26	11	1	0	9	5	3	11	0	0	2	4	0.263	100	1
Allen, C.	144	527	137	22	2	9	58	58	43	95	24	7	2	5	0.260	529	2
Ledee, R.	38	137	35	5	7	3	19	16	12	39	2	1	0	6	0.255	150	13
McEwing, J.	125	492	123	25	3	3	50	30	18	79	6	6	5	17	0.250	564	72
Martinez, D.	145	509	126	24	6	5	71	50	44	66	19	6	3	1	0.248	565	56
Mabry, J.	15	41	10	2	0	2	6	9	4	5	0	0	0	1	0.244	288	247
Miller, D.	101	324	77	31	0	14	39	51	20	85	0	0	3	7	0.238	326	2
Valentin, Jav.	6	226	51	14	3	0	14	20	16	54	0	0	2	3	0.226	240	14
Harris, L.	59	134	30	5	0	0	10	10	10	12	0	0	0	6	0.224	206	72
DeShields, D.	91	323	72	11	1	5	50	31	35	46	24	9	2	11	0.223	363	40
McCracken, Q.	65	163	35	4	1	0	27	14	35	28	7	8	2	1	0.215	163	0
McDonald, J.	5	14	3	1	0	0	1	0	0	2	1	0	0	0	0.214	206	192
Fox, A.	82	244	52	14	2	3	24	22	16	48	3	1	7	12	0.213	301	57
Liefer, J.	9	24	5	0	0	0	4	0	1	8	0	0	0	0	0.208	124	100
Weiss, W.	108	306	61	13	3	4	27	35	31	49	9	7	2	11	0.199	307	1
Jensen, M.	9	21	4	2	0	0	2	2	2	6	0	0	0	1	0.190	37	16
Christensen, M.	6	8	0	0	0	0	0	0	1	2	1	0	0	0	0.000	58	50
Meyers, C.	1	1	0	0	0	0	0	0	0	0	0	0	0	0	0.000	156	155
Pitchers														9			
TOTALS	162	5537	1414	322	39	122	680	654	500	981	118	54	40	125	0.255		

*=Traded

Catching Stats:

Opp Att: 190 Opp St: 123 Opp %: 0.647

YORKTOWN 2000 PITCHING

162 Gm.

PLAYER	G	GS	GC	W	L	S	IP	H	R	ER	W	K	ERA	HR	SH	MAX
Williams, M.	50	0	0	2	2	16	57.67	61	33	27	26	76	4.21	8	0	64
Gooden, D.	14	5	0	1	3	0	56.33	63	37	35	30	38	5.59	9	0	127
Bere, J.	41	0	0	1	2	0	75.00	97	49	49	53	46	5.88	10	0	74
Plunk, E.	39	0	0	2	2	0	82.00	96	65	55	46	70	6.04	18	0	82
Veres, D.	55	0	0	2	3	5	82.33	102	63	56	47	78	6.12	16	0	85
Holt, C.	32	32	3	8	18	0	180.00	246	136	130	77	150	6.50	19	1	180
Meadows, B.	32	32	6	8	19	0	196.00	251	154	142	81	85	6.52	40	1	196
Weathers, D.	55	0	0	3	2	2	99.00	135	82	77	46	83	7.00	20	0	102
Hernandez, L.	32	32	7	4	25	0	220.00	309	188	172	104	156	7.04	27	0	220
Tomko, B. *	25	24	2	4	17	0	142.00	177	126	116	57	101	7.35	34	0	189
Burba, D.	32	32	1	6	22	0	183.33	254	173	161	107	153	7.90	34	0	242
Thompson, M.	5	5	0	2	3	0	28.00	37	27	27	18	19	8.68	3	0	32
Eyre, S.	9	0	0	0	1	0	12.00	23	16	16	7	7	12.00	7	0	28
Belcher, T.	0	0	0	0	0	0	0.00	0	0	0	0	0	ERR	0	0	145
Player	0	0	0	0	0	0	0.00	0	0	0	0	0	ERR	0	0	145.00
Player	0	0	0	0	0	0	0.00	0	0	0	0	0	ERR	0	0	0.00
Player	0	0	0	0	0	0	0.00	0	0	0	0	0	ERR	0	0	0.00
Player	0	0	0	0	0	0	0.00	0	0	0	0	0	ERR	0	0	0.00
TEAM	0	0	0	0	0	0	0.00	0	0	0	0	0	ERR	0	0	0.00

TOTALS

162 162 19 43 119 23 1413.66 1851 1149 1063 699 1062 6.77 245 2

*=Traded

